



Certificate of Analysis

CANNABUSINESS LABORATORIES, LLC

Customer:

Bluegrass Pharmaceuticals LLC
965 Capstone Circle Suite 313

Miamisburg, OH 45342

Received Date **10/25/2023**

COA Released **10/30/2023**

Comments *HPLC Measurement of Uncertainty (Hemp-Infused Product Matrix) is 2.58%.*

Sample ID **231019007**

Order Number **CB231019005**

Sample Name **POTF Full Spectrum Mint Salve**

External Sample ID **POTFMS101923.FSB01**

Batch Number **POTFMS101923.FSB01**

Product Type **Topical**

Sample Type **Topical**

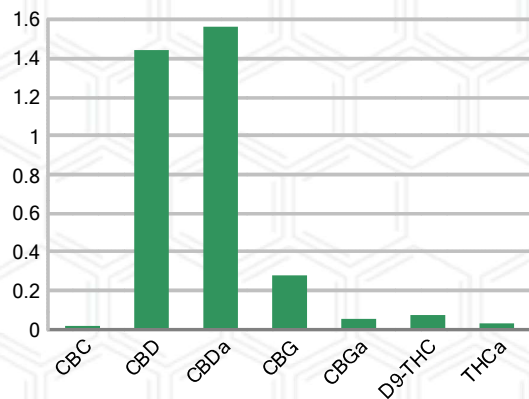
CANNABINOID PROFILE (Product Size = 1 g)

| Analyte | LOQ (%) | % Weight | mg/g | mg/serving |
|--|---------|--------------|--------------|------------------|
| CBC | 0.01 | 0.018 | 0.179 | 0.18 |
| CBD | 0.01 | 1.441 | 14.41 | 14.41 |
| CBDa | 0.01 | 1.562 | 15.62 | 15.62 |
| CBDV | 0.01 | ND | ND | ND |
| CBG | 0.01 | 0.279 | 2.786 | 2.79 |
| CBGa | 0.01 | 0.055 | 0.546 | 0.55 |
| CBN | 0.01 | ND | ND | ND |
| d8-THC | 0.01 | ND | ND | ND |
| d9-THC | 0.01 | 0.074 | 0.743 | 0.74 |
| THCa | 0.01 | 0.031 | 0.306 | 0.31 |
| Total Cannabinoids | | 3.460 | 34.60 | 34.60 |
| Total Potential THC | | 0.101 | 1.011 | 1.01 |
| Total Potential CBD | | 2.811 | 28.11 | 28.11 |
| Total Potential CBG | | 0.327 | 3.265 | 3.27 |
| Ratio of Total Potential CBD to Total Potential THC | | | | 27.83 : 1 |
| Ratio of Total Potential CBG to Total Potential THC | | | | 3.24 : 1 |

SAMPLE IMAGE



CANNABINOIDS % Weight



*Total Cannabinoids refers to the sum of all cannabinoids detected.

*Total Potential CBD = (0.877 x CBDa) + CBD. *Total Potential THC = (0.877 x THCa) + THC. *Total Potential CBG = (0.877 x CBGa) + CBG.

*Total Potential THC/CBD are calculated to take into account the loss of an acid group during decarboxylation.



J. Hobgood
Laboratory Manager
SIGNATURE

Jamie Hobgood
LABORATORY MANAGER

10/30/2023 12:31 PM
DATE

This product has been tested by CannaBusiness Laboratories using validated testing methodologies and a quality system. Values reported relate only to the product tested. CannaBusiness Laboratories makes no claims as to the efficacy, safety, or other risks associated with any detected or non-detected levels of any compounds reported herein. This Certificate shall not be reproduced except in full, without the written permission of CannaBusiness Laboratories. Photo is of sample received by the lab and may vary from final packaging. The results apply to the sample as received.



Certificate of Analysis

CANNABUSINESS LABORATORIES, LLC

Customer

Bluegrass Pharmaceuticals LLC
965 Capstone Circle Suite 313
Miamisburg, OH 45342



Sample Name: POTF Full Spectrum Mint Salve
Sample ID: 231019007
Order Number: CB231019005
Product Type: Topical
Sample Type: Topical
Received Date: 10/25/2023
Batch Number: POTFMS101923.FSB01
COA released: 10/30/2023 12:31 PM

| Potency (mg/g) | | | |
|-------------------------|----------------|--------------------|--------------------|
| Date Tested: 10/27/2023 | | Method: CB-SOP-028 | |
| Instrument: | | | |
| 0.101 % | 2.811 % | 3.460 % | 34.60 mg/g |
| Total THC | Total CBD | Total Cannabinoids | Total Cannabinoids |

| Analyte | Result | Units | LOQ | Result | Units |
|------------------------------------|--------|-------|-------|--------|-------|
| CBC (Cannabichromene) | 0.018 | % | 0.010 | 0.179 | mg/g |
| CBD (Cannabidiol) | 1.441 | % | 0.010 | 14.41 | mg/g |
| CBDa (Cannabidiolic Acid) | 1.562 | % | 0.010 | 15.62 | mg/g |
| CBDV (Cannabidivarin) | ND | % | 0.010 | ND | mg/g |
| CBG (Cannabigerol) | 0.279 | % | 0.010 | 2.786 | mg/g |
| CBGa (Cannabigerolic Acid) | 0.055 | % | 0.010 | 0.546 | mg/g |
| CBN (Cannabinol) | ND | % | 0.010 | ND | mg/g |
| D8-THC (D8-Tetrahydrocannabinol) | ND | % | 0.010 | ND | mg/g |
| D9-THC (D9-Tetrahydrocannabinol) | 0.074 | % | 0.010 | 0.743 | mg/g |
| THCa (Tetrahydrocannabinolic Acid) | 0.031 | % | 0.010 | 0.306 | mg/g |



J. Hobgood
Laboratory Manager
SIGNATURE

Jamie Hobgood

10/30/2023 12:31 PM

DATE

NT = Not tested, ND = Not detected; LOQ = Limit of Quantitation; <LOQ = Detected; >ULOL = Above upper limit of linearity; CFU/g = Colony forming units per 1 gram; TNTC = Too numerous to count

This product has been tested by Cannabusiness Laboratories using validated testing methodologies and a quality system. Values reported relate only to the product tested. Cannabusiness Laboratories makes no claims as to the efficacy, safety, or other risks associated with any detected or non-detected levels of any compounds reported herein. This Certificate shall not be reproduced except in full, without the written permission of Cannabusiness Laboratories. Photo is of sample received by the lab and may vary from final packaging. The results apply to the sample as received.