



Certificate of Analysis

CANNABUSINESS LABORATORIES, LLC

Customer:

Bluegrass Pharmaceuticals LLC
965 Capstone Circle Suite 313

Miamisburg, OH 45342

Received Date **10/25/2023**

COA Released **10/30/2023**

Comments *HPLC Measurement of Uncertainty (Hemp-Infused Product Matrix) is 2.58%.
Estimated results reported due to QC failure.*

Sample ID **231019008**

Order Number **CB231019005**

Sample Name **POTF Full Spectrum Mint Roll-On**

External Sample ID **POTFRO101923.FSB01**

Batch Number **POTFRO101923.FSB01**

Product Type **Topical**

Sample Type **Topical**

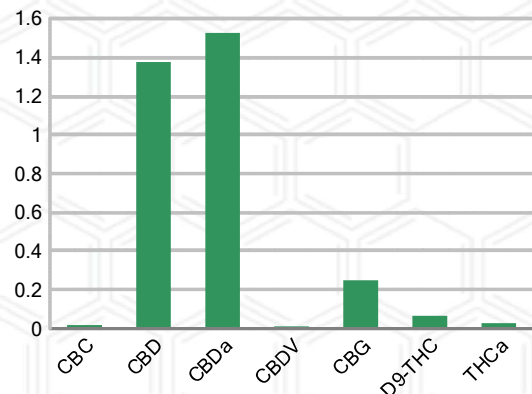
CANNABINOID PROFILE (Product Size = 1 g)

Analyte	LOQ (%)	% Weight	mg/g	mg/serving
CBC	0.01	0.018	0.178	0.18
CBD	0.01	1.374	13.74	13.74
CBDa	0.01	1.524	15.24	15.24
CBDV	0.01	0.012	0.118	0.12
CBG	0.01	0.248	2.480	2.48
CBGa	0.01	ND	ND	ND
CBN	0.01	ND	ND	ND
d8-THC	0.01	ND	ND	ND
d9-THC	0.01	0.066	0.659	0.66
THCa	0.01	0.028	0.281	0.28
Total Cannabinoids		3.270	32.70	32.70
Total Potential THC		0.090	0.905	0.91
Total Potential CBD		2.711	27.11	27.11
Total Potential CBG		0.248	2.480	2.48
Ratio of Total Potential CBD to Total Potential THC			30.12	: 1
Ratio of Total Potential CBG to Total Potential THC			2.76	: 1

SAMPLE IMAGE



CANNABINOIDS % Weight



*Total Cannabinoids refers to the sum of all cannabinoids detected.

*Total Potential CBD = (0.877 x CBDa) + CBD. *Total Potential THC = (0.877 x THCa) + THC. *Total Potential CBG = (0.877 x CBGa) + CBG.

*Total Potential THC/CBD are calculated to take into account the loss of an acid group during decarboxylation.



J. Hobgood
Laboratory Manager

SIGNATURE

Jamie Hobgood

LABORATORY MANAGER

10/30/2023 12:32 PM

DATE

This product has been tested by CannaBusiness Laboratories using validated testing methodologies and a quality system. Values reported relate only to the product tested. CannaBusiness Laboratories makes no claims as to the efficacy, safety, or other risks associated with any detected or non-detected levels of any compounds reported herein. This Certificate shall not be reproduced except in full, without the written permission of CannaBusiness Laboratories. Photo is of sample received by the lab and may vary from final packaging. The results apply to the sample as received.



Certificate of Analysis

CANNABUSINESS LABORATORIES, LLC

Customer

Bluegrass Pharmaceuticals LLC
 965 Capstone Circle Suite 313
 Miamisburg, OH 45342



Sample Name: POTF Full Spectrum Mint Roll-On

Sample ID: 231019008

Order Number: CB231019005

Product Type: Topical

Sample Type: Topical

Received Date: 10/25/2023

Batch Number: POTFRO101923.FSB01

COA released: 10/30/2023 12:32 PM

Potency (mg/g)	
Date Tested: 10/27/2023	Method: CB-SOP-028
Instrument:	

0.090 % Total THC	2.711 % Total CBD	3.270 % Total Cannabinoids	32.70 mg/g Total Cannabinoids
-----------------------------	-----------------------------	--------------------------------------	---

Analyte	Result	Units	LOQ	Result	Units
CBC (Cannabichromene)	0.018	%	0.010	0.178	mg/g
CBD (Cannabidiol)	1.374	%	0.010	13.74	mg/g
CBDa (Cannabidiolic Acid)	1.524	%	0.010	15.24	mg/g
CBDV (Cannabidivarin)	0.012	%	0.010	0.118	mg/g
CBG (Cannabigerol)	0.248	%	0.010	2.480	mg/g
CBGa (Cannabigerolic Acid)	ND	%	0.010	ND	mg/g
CBN (Cannabinol)	ND	%	0.010	ND	mg/g
D8-THC (D8-Tetrahydrocannabinol)	ND	%	0.010	ND	mg/g
D9-THC (D9-Tetrahydrocannabinol)	0.066	%	0.010	0.659	mg/g
THCa (Tetrahydrocannabinolic Acid)	0.028	%	0.010	0.281	mg/g



J. Hobgood
 Laboratory Manager

Jamie Hobgood

10/30/2023 12:32 PM

SIGNATURE

DATE

NT = Not tested, ND = Not detected; LOQ = Limit of Quantitation; <LOQ = Detected; >ULOL = Above upper limit of linearity; CFU/g = Colony forming units per 1 gram; TNTC = Too numerous to count

This product has been tested by CannaBusiness Laboratories using validated testing methodologies and a quality system. Values reported relate only to the product tested. CannaBusiness Laboratories makes no claims as to the efficacy, safety, or other risks associated with any detected or non-detected levels of any compounds reported herein. This Certificate shall not be reproduced except in full, without the written permission of CannaBusiness Laboratories. Photo is of sample received by the lab and may vary from final packaging. The results apply to the sample as received.